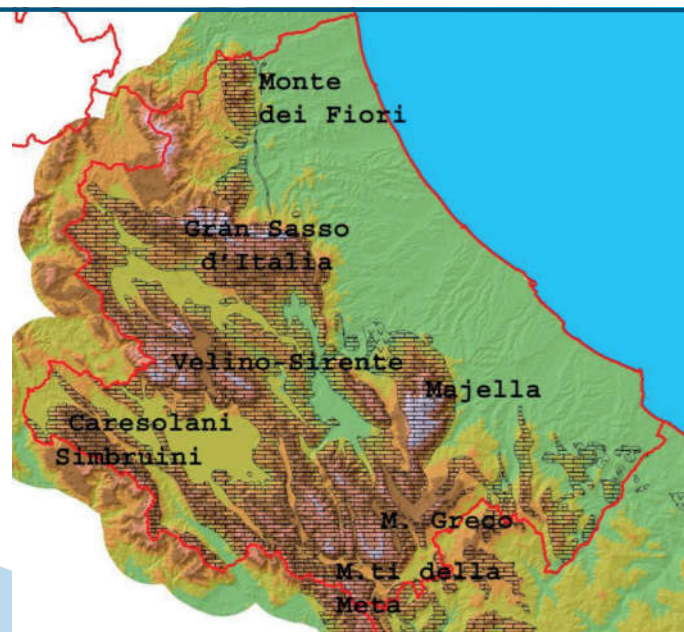




Abruzzo karst areas occupy more than 35% of the regional territory and are mainly composed of limestone rocks (pure limestone, limestone-dolomite and marly limestone). The most important morphocharistic units are made up of imposing mountain massifs that majestically rise in the Apennine direction.



THE MAIL AREAS WITH SPELEOLOGICAL INTEREST

Gran Sasso D'Italia
Majella
Morrone
Velino Sirente
Monte Greco
Monti Simbruini
Monti Carseolani
Monte Meta



Kartic landscape of South side of M. Sirente (photo M. Sivelli)



Springs of Liri (photo M. Vianelli)

CADASTRE DETAIL

NUMBER OF CAVES IN CADASTRE	600
ARTIFICIAL CAVES IN THE CADASTRE	35
SHOW CAVES	3

The longest caves (> 1000 meters)

Luppa Cave	2020 m
Big Cave of the Beers	1875 m
Lupa Cave	1800 m
Pietrasecca Ovito	1370 m
Cavallone Cave	1254 m

The deepest caves (> 100 meters)

Andrea Pietrolungo Abyss	- 370 m
Luppa Cave	- 178 m
Big Cave of the Beers	- 119 m

Clubs associated with the Abruzzo Speleological Federation

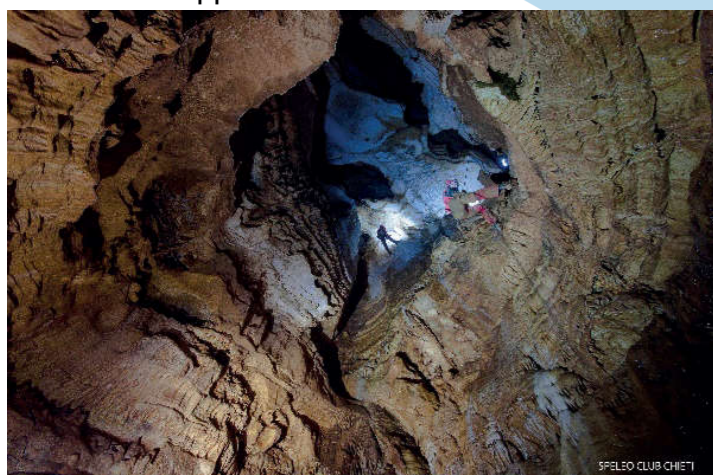
- Speleo Club Chieti
- Centro Speleologico Majella
- APS Majella
- Gruppo Grotte e Forre CAI L'Aquila
- Gruppo Speleologico Aquilano
- Gruppo Grotte CAI Arsita
- Gruppo Esplorazione Speleologica "A. Pietrolungo" CAI Pescara
- Gruppo Grotte e Forre CAI Teramo
- Speleo Club Teramo

KARST WATERS

In Abruzzo there are some of the largest hydrogeological systems of Italy. Springs, that surround the basal margins of the great carbonate massifs, are numerous and very abundant. Due to intense fracturing of the absorption zones, the network of underground water circulation is normally dispersive. The major springs of this type are the Pescara (Sirente), the Verde (Majella) and the Tirino (Gran Sasso). It should also be remembered that the largest spring in Italy, the Pescara, in Lazio, is largely powered by the Velino Massif in Abruzzo. rare underground drainage collectors are rare; the most important of the region is surely represented by the resurgence of the Stiffe cave. The karstic waters of the hydrogeological tunnels are those of Pietrasecca Ovito, Imele and Luppa.

SUPERFICIAL KARST PHENOMENA

Although the superficial karst is very developed, local lithological and structural conditions have not allowed, as a rule, the establishment of particularly deep and extensive hypogeal form. Caves with greatest extensions are principally located on Carseolani Mounts; Luppa Cave (2020 m); Great Cave of the Beers (1875 m); Pietrasecca Ovito (1370 m). On the Majella, are located the Cavallone Cave (1250 m) and the Lupa Cave (1800 m).



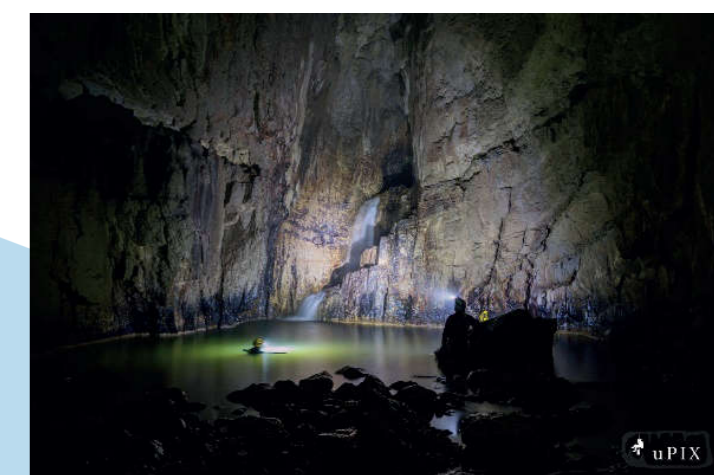
Lupa Cave



Cavallone Cave



Big Cave of the Beers



Pietrasecca Ovito