



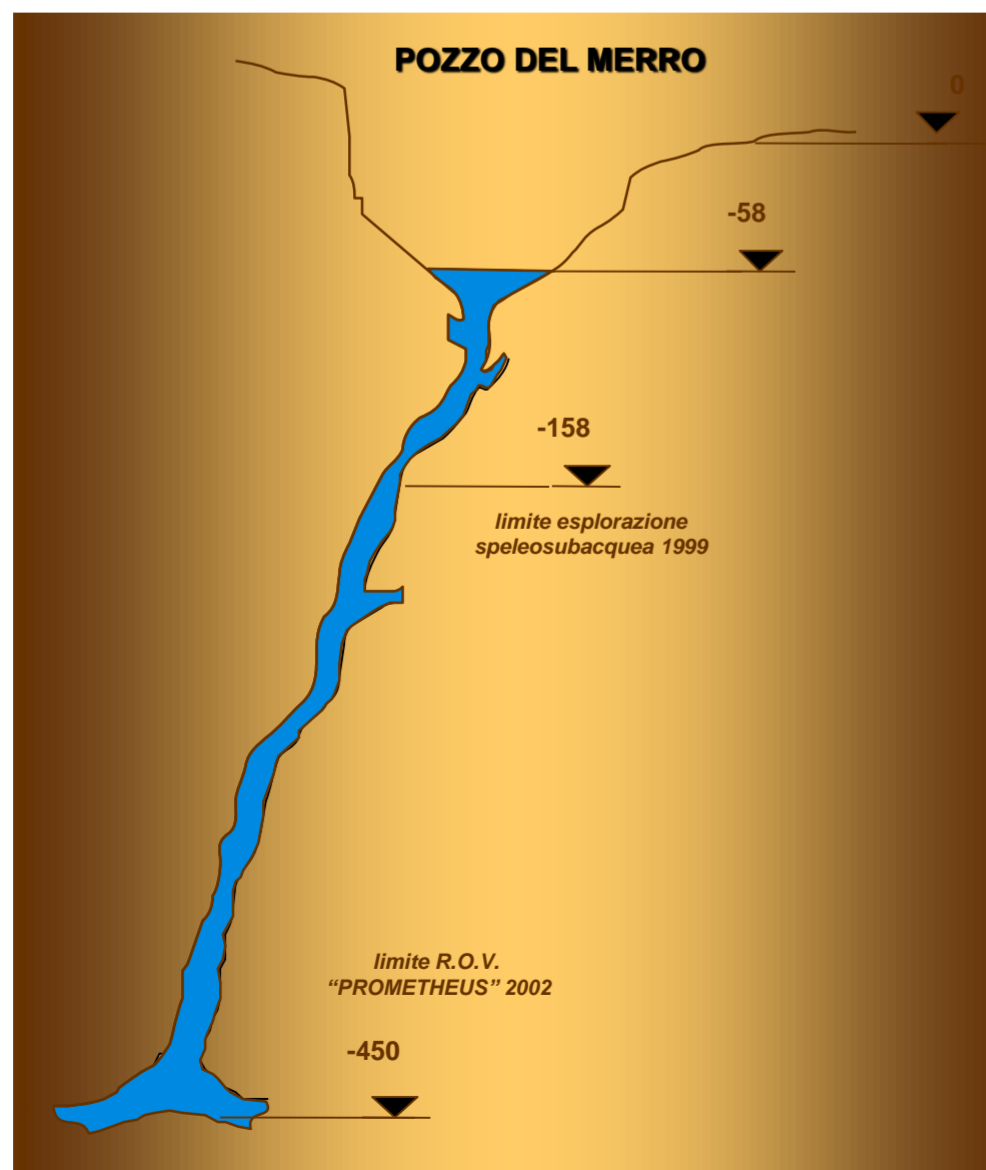
LAZIO

25% of the territory consists of carbonate rocks, for a total surface of 4300 km². The conglomerates rocks extend over 100 km², while the overall extension of the travertines is 150 km². The total development of the 2162 caves included in the Regional Cave Registry exceeds 120 km.

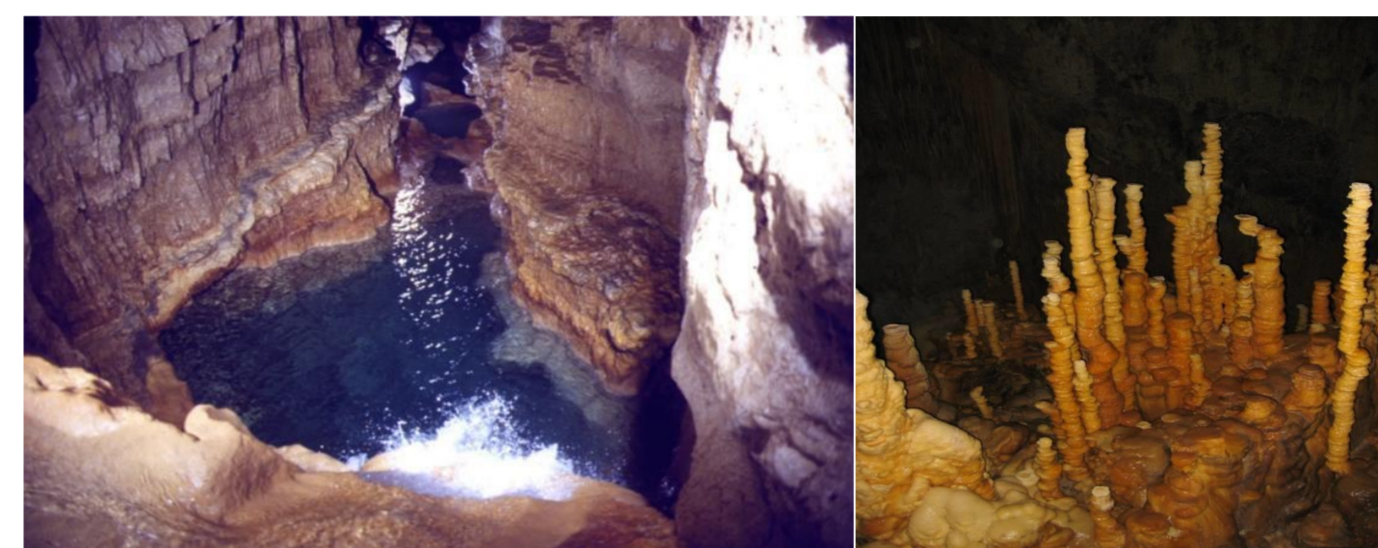
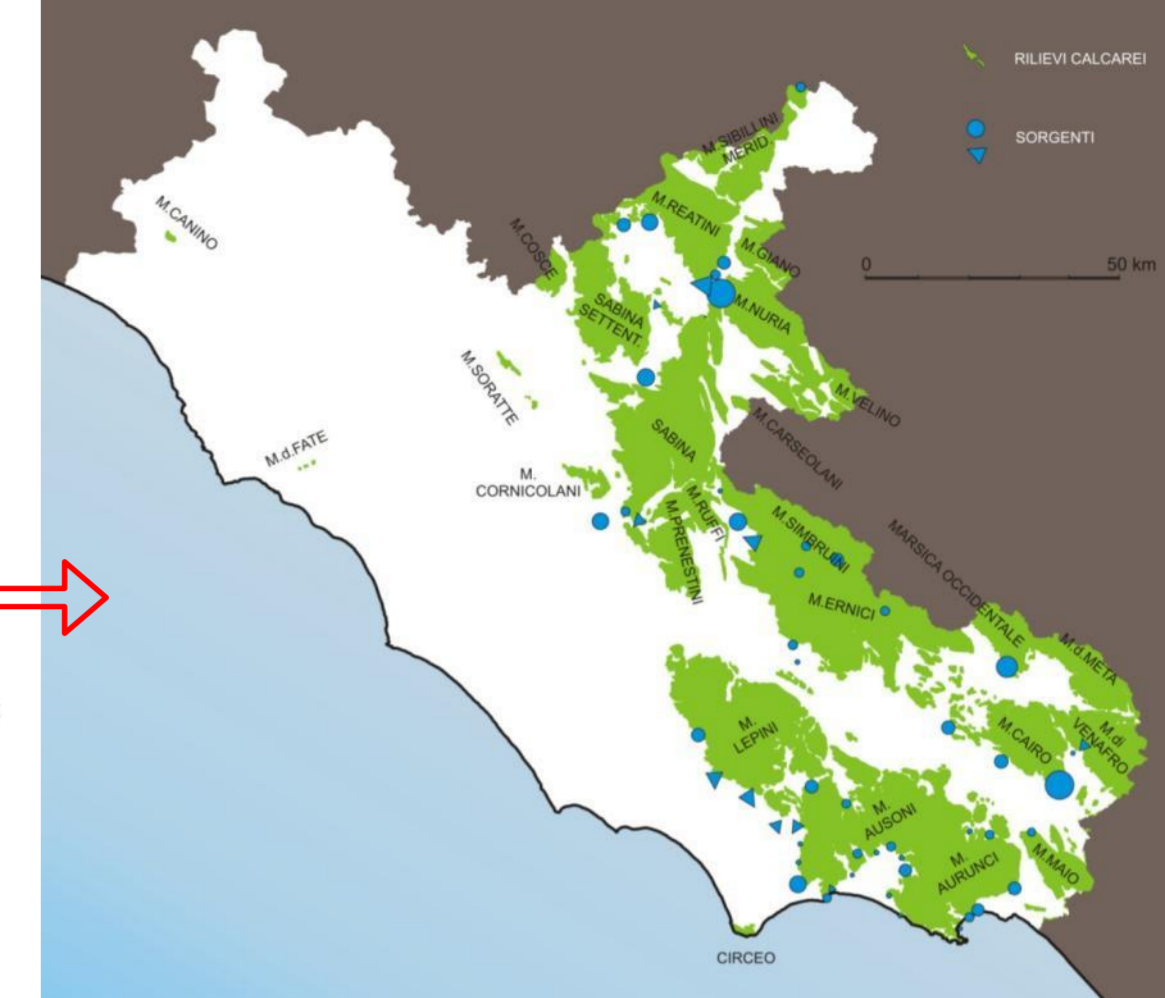


Within the Apennines, the most typical surface forms are the karstic fields. They are the remains of ancient hydrographic networks broken by the uplift of the mountain ranges. Today they are closed water basins, inside which rainwater infiltrates through dolines and "lapiaz".

Most of the caves are formed by wells set on fractures, alternating narrow tunnels which develop in a meander form. The large karst aquifers contain vital water resources for the region. Sources of the most abundant in Italy drain the limestone massifs: Peschiera (18 m³ / s) at the foot of M. Nuria and Acqua Marcia (5.4 m³ / s) at the base of M. Simbruini feed the aqueducts of the capital. The karstic waters are normally of excellent quality (drinkable without the need for special treatments). However, on the edge of the most western chains, the waters mix with the gases, and the deep hydrothermal waters rise along significant faults.



Deposits of gypsum or particular forms of corrosion testify the presence of sulphurous water in some caves. The Pozzo del Merro (M. Cornicolani), explored with the Remote Operated Vehicle up to 392m depth, is the second deepest flooded cave in the world.



Groups belonging to the Speleological Federation of Lazio
Associazione Speleologi Romani
Associazione Speleologica Romana '86
Circolo Speleologico Romano
Gruppo Grotte Castelli Romani
Gruppo Speleo Archeologico Vespertilio
Gruppo Speleologico CAI Collesferro Ipogei Monti Lepini
Gruppo Speleologico CAI Roma
Gruppo Speleologico Ciociaro CAI Frosinone
Gruppo Speleologico F. Ermini le Talpe CAI Rieti
Gruppo Speleologico Guidonia Montecelio
Gruppo Speleologico Sabino
Gruppo Speleologico Urri
Shaka Zulu Club Subiaco
Speleo Club Roma

CONTACT
WWW.SPELEO.LAZIO.IT

The main areas of speleological interest
Travertini del Fiume Fiora
Monte Soratte
Monti Reatini e Sabini
Monti Simbruini e Monti Ernici
Conglomerati di Montecoccioli
Monti del Parco Nazionale e Monte Cairo
Monti Lepini
Monti Ausoni e Monti Aurunci
Monte Circeo e Isole Ponziane

The five largest caves in the registry	meters
Grotta di Cittareale	4000
Grotta di Pastena	3700
Grotta degli Urli	3620
Abisso di Monte Vermicano	3500
Grotta del Formale	2920

The five deepest caves in the registry	meters
Ouso di Passo Pratiglio	840
Ouso della Rava Bianca	710
Grotta degli Urli	610
Inghiottitoio di Campo di Caccia	610
Abisso Consolini	555

Speleologists surveyed in 2018: 400

