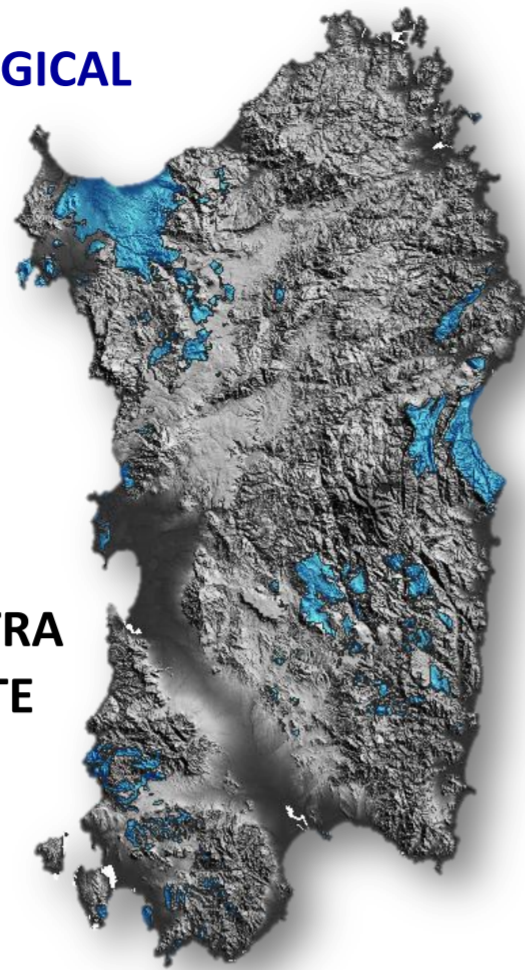




Sardinia

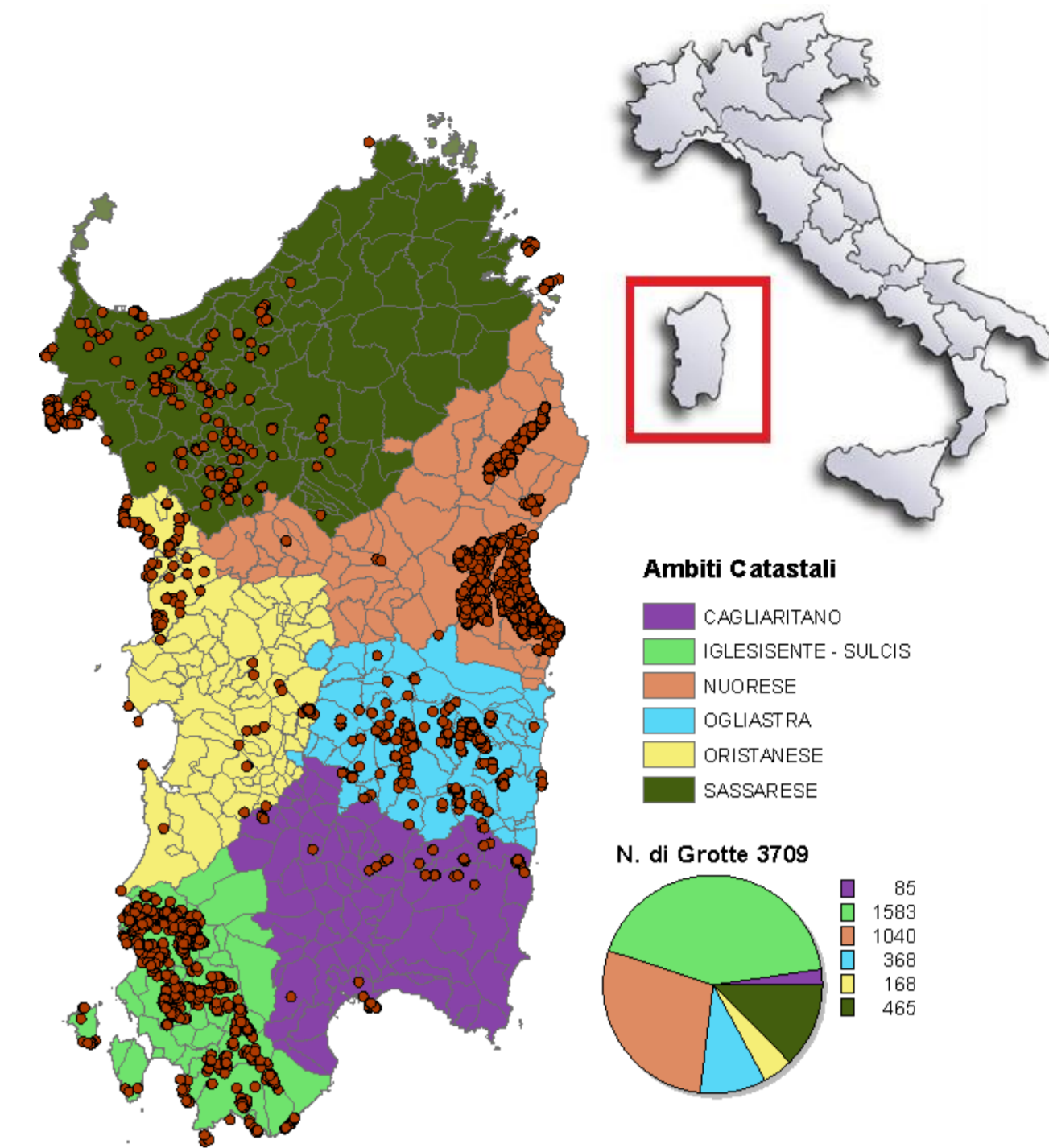
AREAS OF SPELEOLOGICAL INTEREST

- SASSARESE
- CAPO CACCIA
- CAPO FIGARI
- MONTALBO
- SUPRAMONTES
- TACCHI D'OGLIASTRA
- SULCIS - IGLESIENTE



SARDINIAN KARST

In Sardinia, the karst areas extend for about 2088 sq km, corresponding to the 8.7% of the entire region surface. The classified karst areas are 219, of which 90 in Cagliari Province, 64 in Nuoro Province, 54 in Sassari Province, and 5 in Oristano; 4 karst areas are located on the Cagliari-Nuoro border and 2 between Oristano and Nuoro. The largest carbonate outcrops by province is in Sassari, counting almost 860 sq km of karst. Following is the provinces of Nuoro, with almost 810 sq km, Cagliari with about 360 sq km, and Oristano with just over 50 sq km



WEBGIS

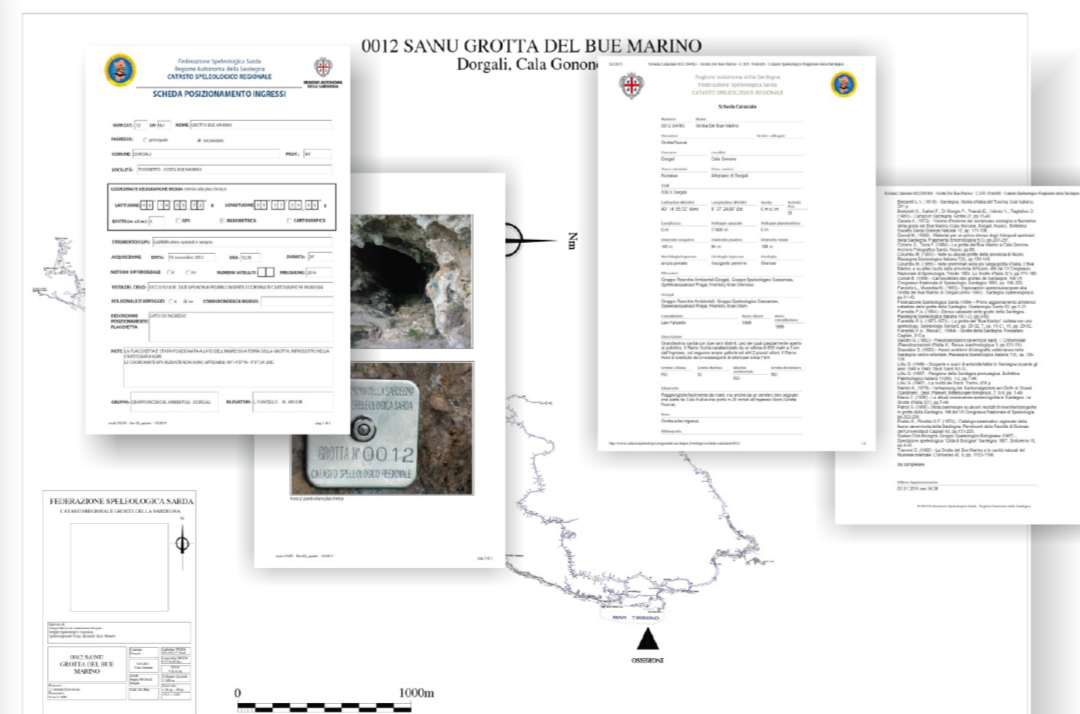
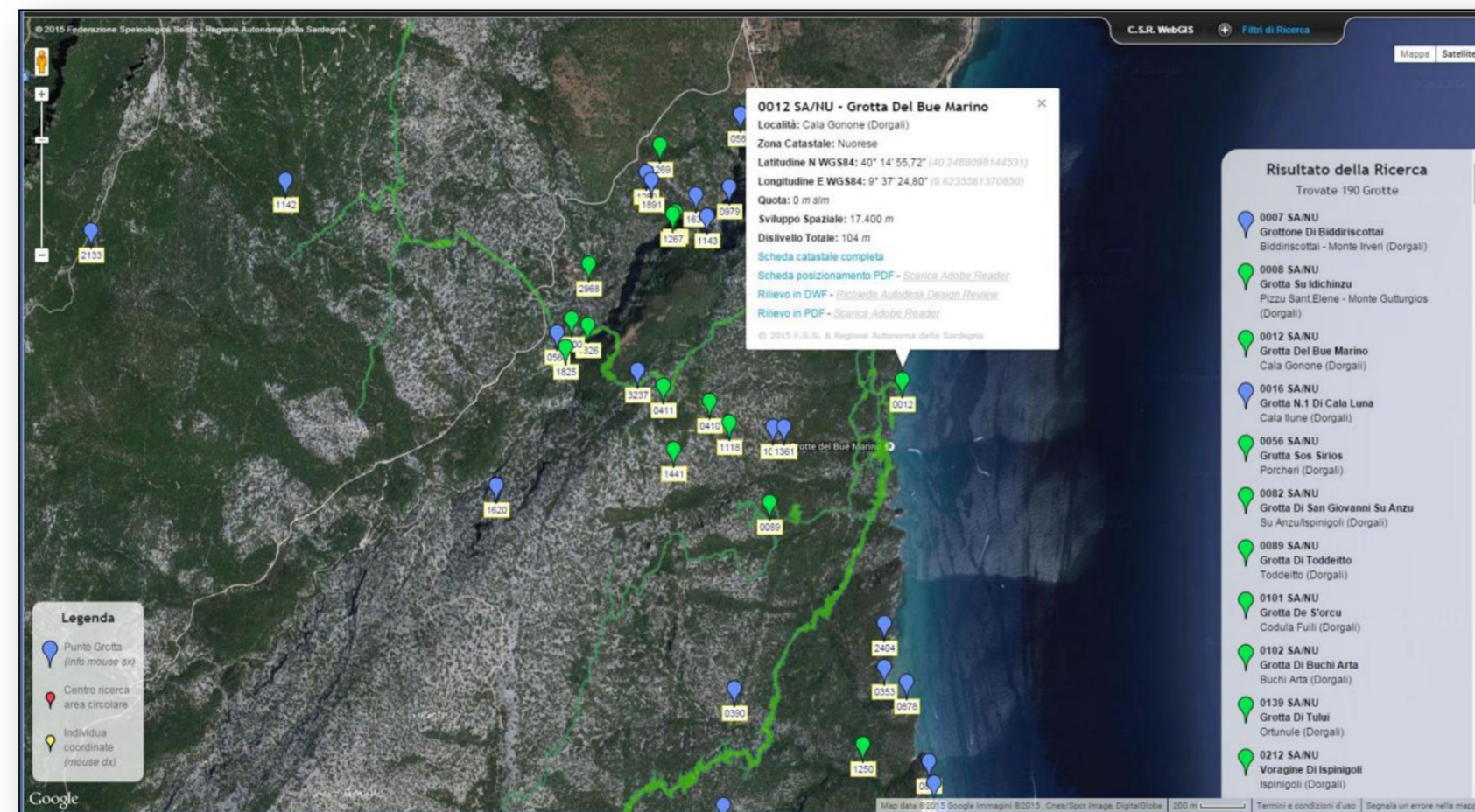
The Sardinian Caves Cadastre WebGIS is the official cave cadastre geodatabase viewing platform, implemented by the FSS - www.catastospeleologicoregionale.sardegna.it

CSR GENERAL INFORMATION	
SURVEYED CAVES	3709
TOTAL LENGHT (KM)	450
NUMBER OF SURVEYS ON WEBGIS	3677
CAVE ENTRANCES GPS POSITIONED	2300
GEOGRAPHIC COORDINATE SYSTEM	WGS84

LONGEST CAVES	
CODULA ILUNE/BUE MARINO SYSTEM	70000 m
SU BENTU – SA OCHE CAVE	17000 m
ST. GIOVANNI SU ANZU – ISPINIGOLI CAVE	14320 m
SA RUTT'E S'EDERA CAVE	12931 m
IS ANGURTIDORGIUS CAVE	10890 m
SU MANNAU – SAN PIETRO CAVE	8600 m

DEEPEST CAVES	
LOVETTECANNAS CAVE	- 502 m
SU ENI E' ISTETTAI CAVE	- 484 m
CODULA ILUNE SYSTEM	- 361 m
S'ORALE E SU MUDRECU CAVE	- 336 m
GUTTURU 'E MURGULAVÒ	- 310 m
S'ISTERRU 'E GOLGO	- 294 m

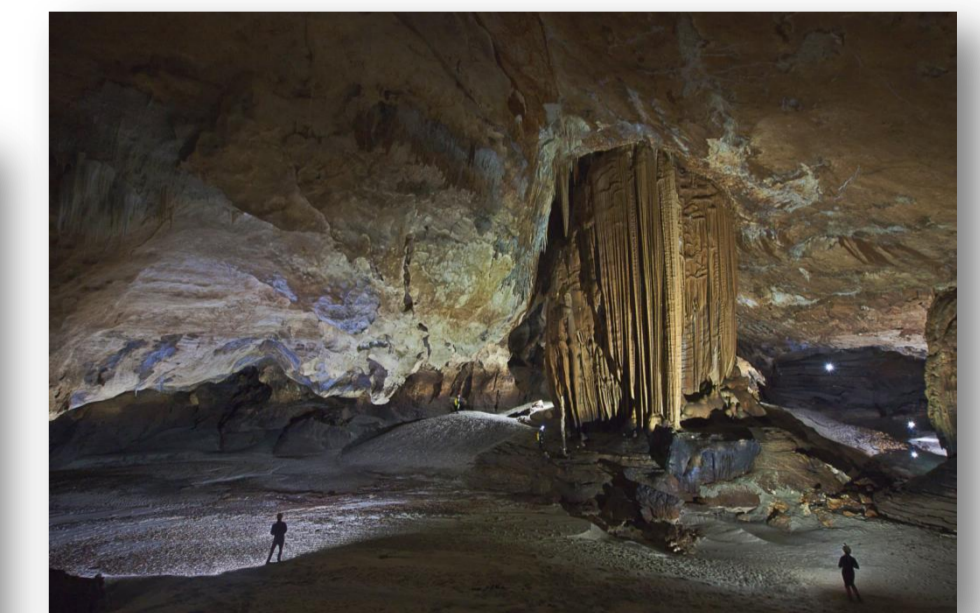
Data up to January 2018



SARDINIAN CAVES CADASTRE

The Sardinian Government Law N.46, 21.09.1993, establishes the Sardinian Caves Cadastre (CSR) and entrusted the Sardinian Speleological Federation (FSS) to its management.

The documentation digitisation process started in 1999. In 2007, the Sardinian Government Law N.4 formalised the Sardinian Cave Cadastre addressed to the Department of Environment, and managed by the FSS. Hence, a new period of the CSR begins, mainly addressed to the continuous updating the cadastral database, as well as to the modernisation of the existing frame



There are **31** speleological groups federated to the Sardinian Speleological Federation